

*A life AS RARE AS nature.*

**Nature Vista**  
KALYAN - DOMBIVLI LINKWAY

SITE ADD: MALANGAD ROAD, DWARLI, KALYAN EAST, MAHARASHTRA 421 306

[www.naturevistakalyan.com](http://www.naturevistakalyan.com)

📞 022 3508 3508



Nature Vista Building - 1 Bearing MahaRERA Registration No. P51700052551  
Nature Vista Building - 2 Bearing MahaRERA Registration No. P51700056365  
More information available on <http://www.maharera.gov.in>

[www.naturevistakalyan.com](http://www.naturevistakalyan.com)





## KALYAN DOMBIVLI LINKWAY

*the future is taking shape*



The Kalyan-Dombivli Linkway is poised to be the corridor of growth with numerous ongoing and upcoming developments along the way. Be a part of this destination and take the route to a better tomorrow.

### Own An Address That Connects You To Everywhere

The city-centric location of the project will result in excellent connectivity with well-developed transportation networks, seamlessly linking residents to major urban centers and enhancing accessibility for a thriving community.

- Metro Line 5 & Metro Line 12
- Kalyan Ring Road
- Kalyan Station Revamp Plan
- Upcoming Airoli-Katai Tunnel Road
- Virar-Alibaug Multimodal Corridor
- Enhanced Road Connectivity With 6 Economic Hubs
- Upcoming Navi Mumbai International Airport
- Mankoli Mothagaon Bridge
- Ahmedabad Mumbai Bullet Train

WITNESS A WORLD ENVELOPED  
*in 32 acres of bliss*





INTRODUCING

# Nature Vista

KALYAN - DOMBIVLI LINKWAY

Located in the heart of Kalyan on the Kalyan-Dombivli Linkway, discover a vast green paradise at 'NatureVista'. Where lush landscapes, the symphony of chirping birds, and myriad shades of green spread across 32 acres bring a sense of harmony.

With nature integrated into every aspect of the project, find a rich and peaceful environment that offers the perfect balance of life. Come home and experience **a life as rare and extraordinary as nature itself.**



32 Acres Mixed Use Development



Homes With Decks Overlooking Majestic Panoramas



Over 100+ Lifestyle Amenities



Sector 1 – Twelve Towers Of 22-27 Storeys



Nature Themed Lifestyle Across The Development



Redefining Recreation With Lavish Clubhouse







32 ACRES  
*mixed use development*



HOMES WITH DECKS OVERLOOKING  
*majestic panoramas*

EXPERIENCE A REALM  
*where tranquility fuses with luxury*



OVER 100+  
*lifestyle amenities*



SECTOR-1: TWELVE TOWERS OF  
*22- 27 storeys*



DISCOVER JOY AT  
*Kalyan-Dombivli linkway*

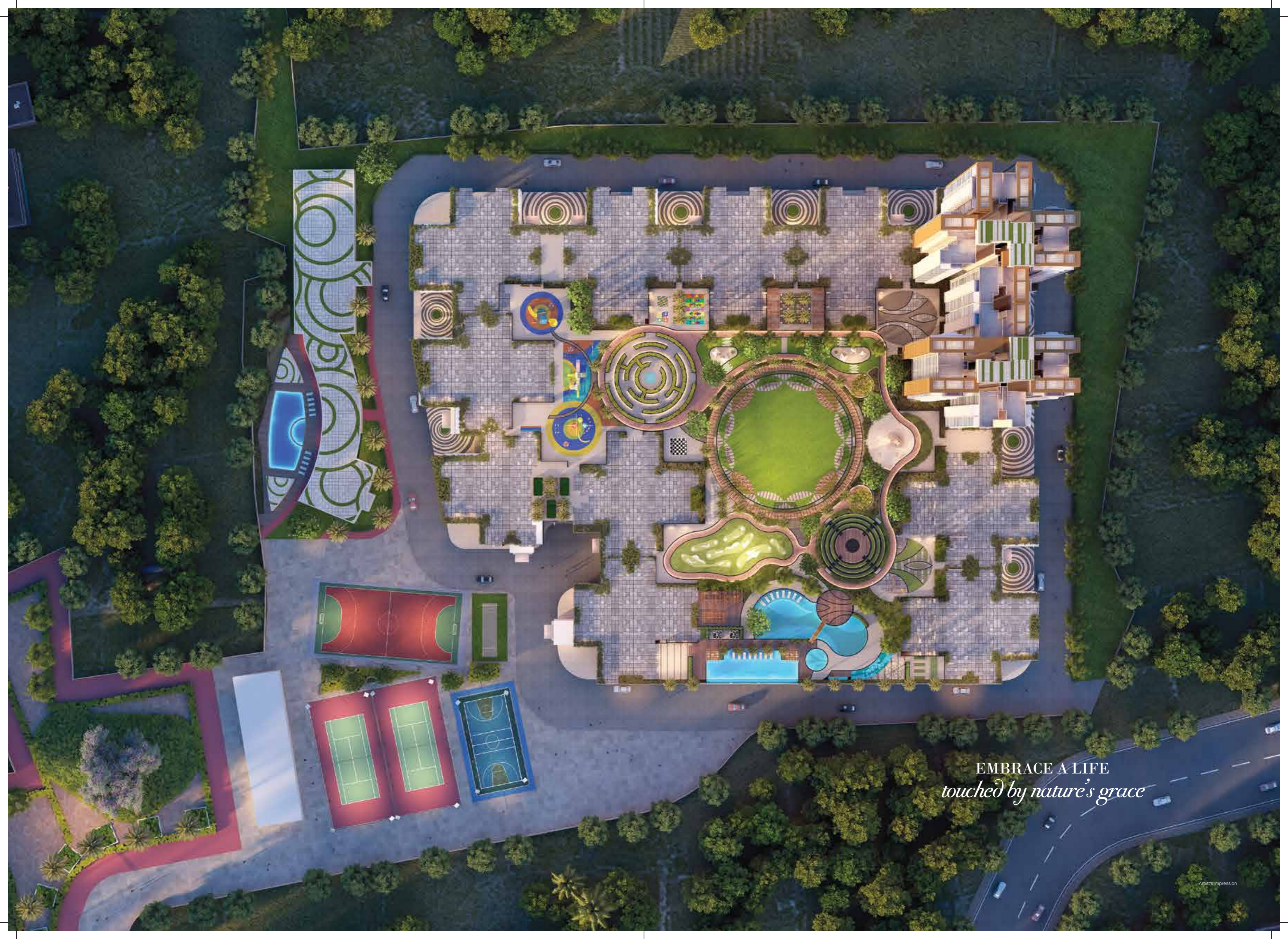
NATURE THEMED LIFESTYLE  
*across the development*



REDEFINING RECREATION WITH  
*lavish clubhouse*







EMBRACE A LIFE  
*touched by nature's grace*





THE EARTH  
HAS ITS *music*  
FOR THOSE  
WHO *listen*

Representational Image



**amazon**

THE GROUND ZONE OFFERING  
A LIFESTYLE PAR EXCELLENCE

REJOICE TO YOUR HEART'S CONTENT  
*amidst exquisite indulgences*



FOOTBALL COURT  
BASKET BALL CUM TENNIS COURT  
PICKLE BALL  
NET PRACTICE CRICKET PITCH  
COVERED SEATING ARENA FOR SPECTATORS  
MOUND SEATING  
CYCLING TRACK ALONG THE ROAD  
TREE HOUSE  
HERB GARDEN  
BONSAI GARDEN



BRING FORTH THE INNER  
*athlete in you*



Cycling Track



Football Court



Pickleball



Tree House



Basket Ball Court



Net Cricket



TO *discover*  
YOURSELF,  
YOU MUST FIRST  
LOSE *yourself*



Representational Image



atlantic

THE PODIUM LEVEL WITH INDULGENCES  
FOR AN EXPERIENTIAL LIFE

EMBRACE A FINER LIFESTYLE  
*amidst choicest recreation avenues*



- ADULT'S INFINITY LAP POOL
- KIDS POOL
- INFORMAL POOL
- SPLASH PAD / DRY FOUNTAIN / MUSICAL FOUNTAIN
- OPEN SHOWER (FOR BODY TEMPERATURE CONTROL)
- AQUA LOUNGER
- POOL SIDE CABANA
- DAY BED
- OPEN JACUZZI FOR FAMILIES
- POOL SIDE BAR
- PERGOLA SEATING
- POOL SIDE OPEN PANTRY
- ALFRESCO POOL SIDE DINING
- KITCHEN FOR BIG FUNCTIONS
- CHAI TAPRI POINT
- STAR GAZING
- POOL DECK SEATING
- GREEN WALK
- RAIN DANCE
- CHANGING ROOM / TOILETS / SHOWER
- GREEN HOUSE
- ORGANIC VEGETABLE GARDEN
- OPEN GYM
- PEBBLE SEATING
- ACUPRESSURE PATHWAY
- SENIOR CITIZEN'S CORNER (OUTDOOR)
- SENIOR CITIZEN'S SEATING (INDOOR)
- AMPHITHEATRE FOR PERFORMANCE AND WORKSHOPS
- STAGE
- FLAG HOISTING POINT
- MOUND SEATING
- BENCH
- SKATING RINK
- CHITCHAT CORNER
- TEMPLE
- PARIKRAMA PATH
- TEMPLE LAWN
- DEVOTEE'S CORNER
- COVERED AREA FOR OCCASIONAL POOJA PREPARATION
- INDOOR MUSIC CORNER
- ELEVATED PICNIC DECK FOR TENT LIVING AND MINIATURE CAMP FIRE
- SLOPE DOWN GARDEN
- SEATING PLAZA
- BOARD WALK CONNECTION / BRIDGE
- READER'S CORNER
- ADULT'S SWING
- SCULPTURED WATERBODY
- MAZE GARDEN
- LIFE SIZE GREEN CHESSBOARD
- FITNESS TRACK
- MULTIFUNCTIONAL LAWN
- MULTIPURPOSE DESIGNER PAVILION FOR BUFFET / OPEN BARBEQUE
- LEISURE SEATING - BEAN BAGS
- OPEN PROJECTOR THEATER (SCREEN)
- FLORAL TREE BOSQUE
- KIDS PLAY AREA (AGE 9 - 12 YEARS)
- TOTLOT (AGE 4 - 8 YEARS)
- ROCK CLIMBING WALL
- POOL FOOTBALL
- COCOON SWING
- LIFE SIZE LUDO BOARD
- LIFE SIZE SNAKE AND LADDER BOARD
- FUN BOARD GAMES / HOPSCOTCH
- HAMMOCK GARDEN
- SHADED WALKWAY
- ROW OF PALM TREES
- FOREST BATH
- POOL SIDE LAWN
- MINI GOLF COURSE
- ROW OF FRAGRANT TREES
- ZEN GARDEN
- CRECHE
- CANVAS CORNER



EXPERIENCE A SENSE OF PEACE  
*envelop your soul*



Pergola



Stargazing Deck



Mini Golf Course



Senior Citizen Corner



Aqua Lounger



Open Projector Theater



Alfresco Pool Side Dining



Green Walk



Pool Side Bar







THE *soul* IS  
PRECIOUS,  
IT NEEDS TO BE  
*pampered*



A LAVISH CLUB LIFE EXPERIENCE  
CURATED FOR YOUR HAPPINESS

WELCOME TO AN INDULGENT WORLD  
*curated for true happiness*



- CLUB SWIMMING POOL  
WITH WATERFALL
- BANQUET HALL
- SQUASH
- INDOOR BADMINTON COURT
- ROCK SEATING
- LILY POND
- INDOOR GYM
- CHANGING ROOM
- MINI THEATRE
- DANCE ROOM
- CLUB CAFE
- CAFE OUTDOOR DECK
- MUSIC ROOM
- STUDIO
- LIBRARY
- CLUB LOUNGE
- TT ROOM
- POOL TABLE
- SPA



ADD COLOUR TO YOUR LEISURE TIME  
*with immersive escapades*



Library



Dance Studio



Pool Table



Spa



Mini Theatre



Indoor Table Tennis Room



Indoor Badminton



Squash





# olive & oak

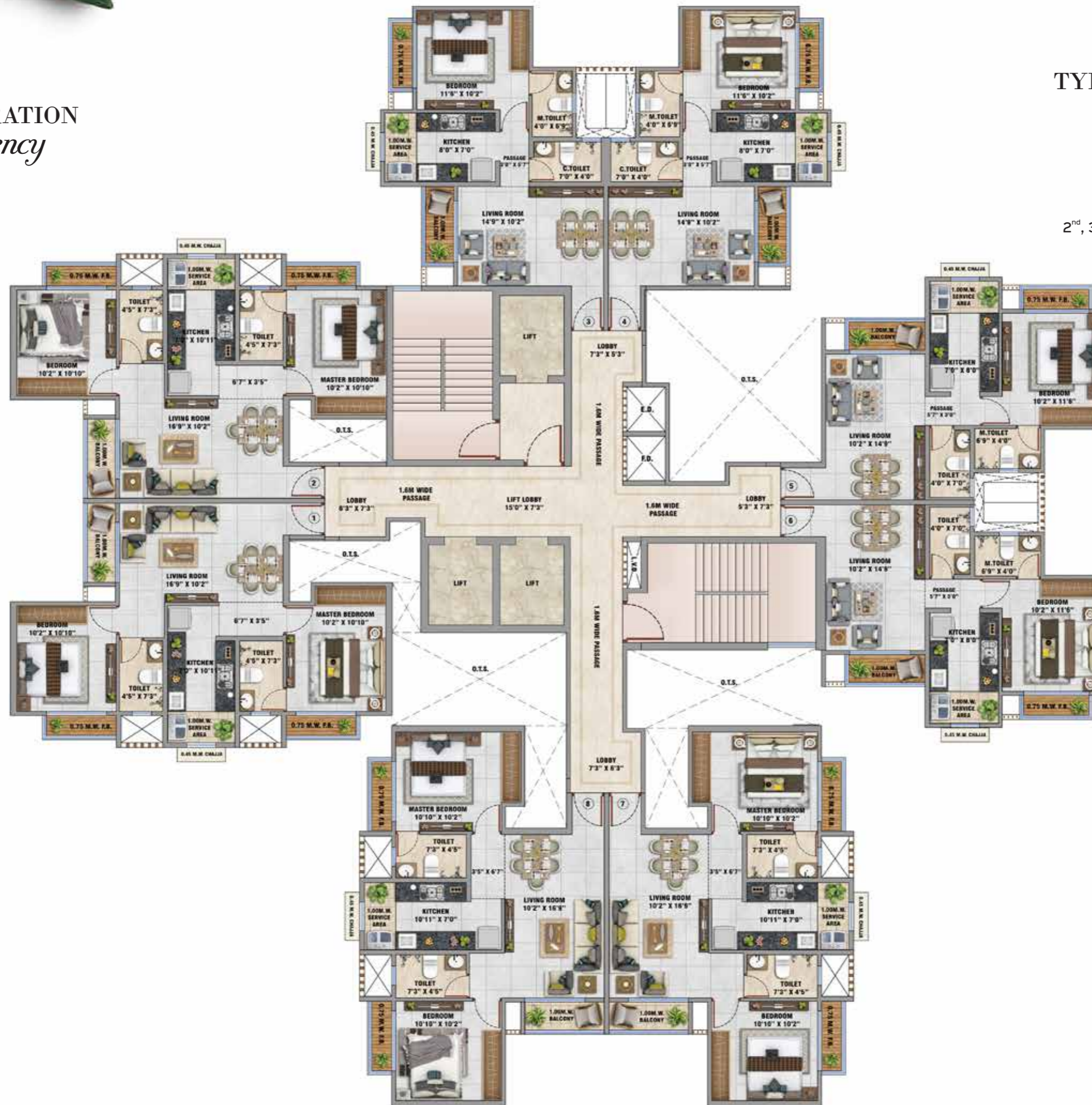
BLENDING TIMELESSNESS  
*with modern luxury*



Olive and Oak epitomize opulent living with their exquisitely designed residences, where every detail reflects unparalleled elegance and comfort. Here, residents bask in serene tranquility, surrounded by verdant landscapes and world-class amenities, creating an oasis of sophistication and natural beauty.



AN ILLUSTRATION  
*of efficiency*



## TYPICAL FLOOR PLAN



### OLIVE

2<sup>nd</sup>, 3<sup>rd</sup>, 4<sup>th</sup>, 5<sup>th</sup>, 7<sup>th</sup>, 8<sup>th</sup>, 9<sup>th</sup>, 10<sup>th</sup>, 12<sup>th</sup>, 13<sup>th</sup>,  
14<sup>th</sup>, 15<sup>th</sup>, 17<sup>th</sup>, 18<sup>th</sup>, 19<sup>th</sup>, 21<sup>st</sup>



This layout plan is a representation for illustrative purposes only. The dimensions and layout depicted here may vary from actuals

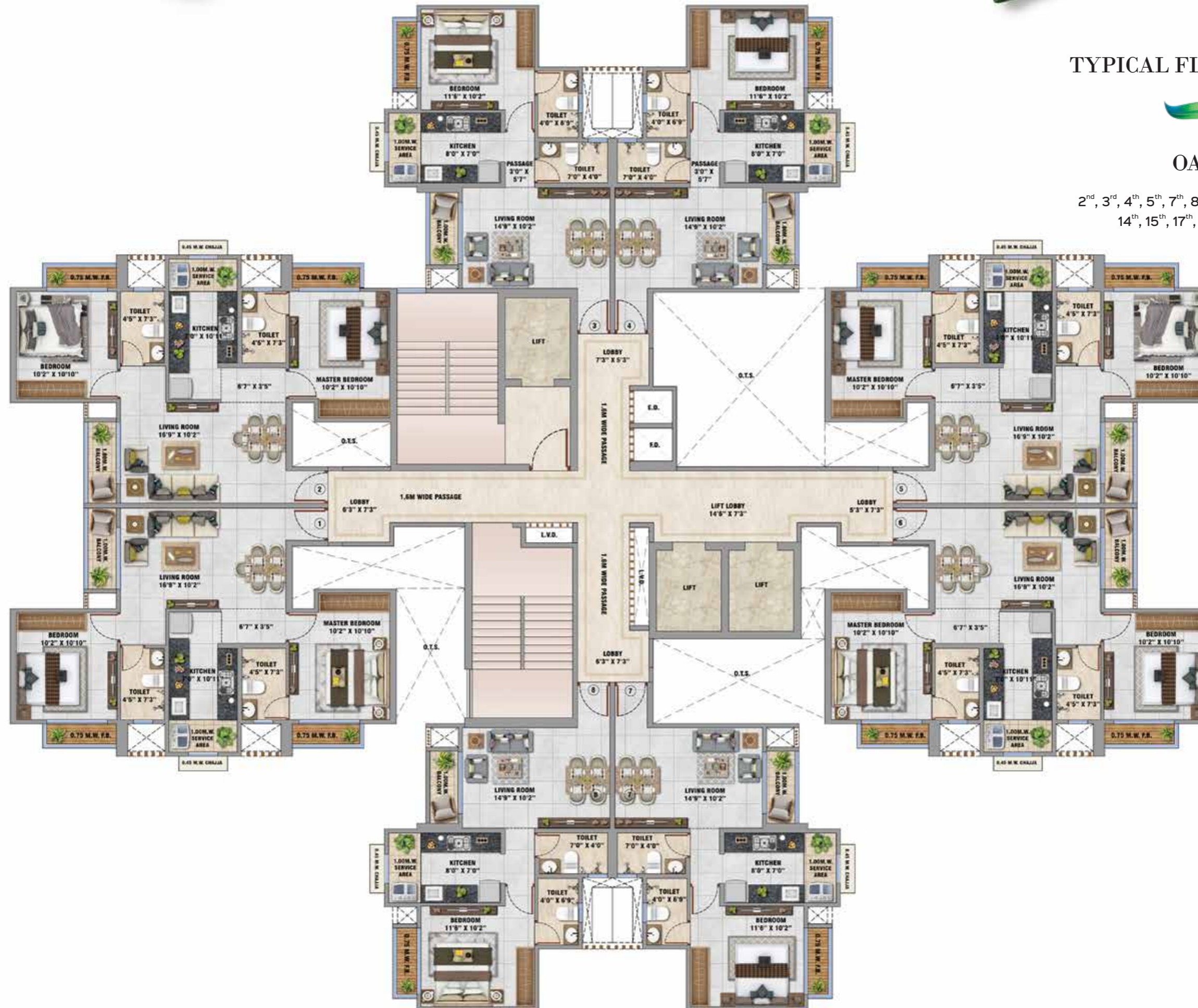


# TYPICAL FLOOR PLAN



## OAK

2<sup>nd</sup>, 3<sup>rd</sup>, 4<sup>th</sup>, 5<sup>th</sup>, 7<sup>th</sup>, 8<sup>th</sup>, 9<sup>th</sup>, 10<sup>th</sup>, 12<sup>th</sup>, 13<sup>th</sup>,  
14<sup>th</sup>, 15<sup>th</sup>, 17<sup>th</sup>, 18<sup>th</sup>, 19<sup>th</sup>, 21<sup>st</sup>



This layout plan is a representation for illustrative purposes only. The dimensions and layout depicted here may vary from actuals



# REFUGE FLOOR PLAN



## OLIVE

6<sup>th</sup>, 11<sup>th</sup>, 16<sup>th</sup>, 20<sup>th</sup>



This layout plan is a representation for illustrative purposes only. The dimensions and layout depicted here may vary from actuals

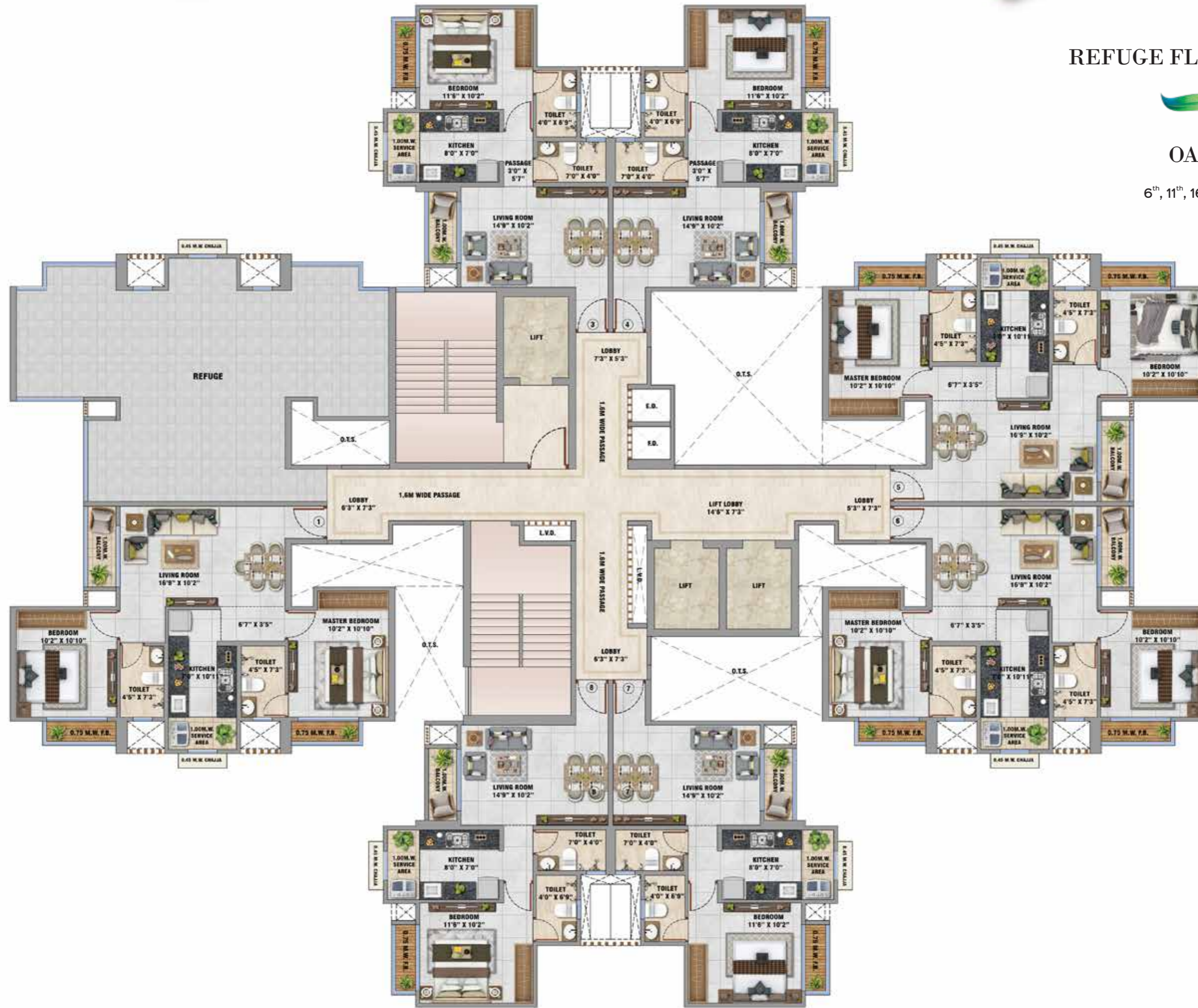


# REFUGE FLOOR PLAN



## OAK

6<sup>th</sup>, 11<sup>th</sup>, 16<sup>th</sup>, 20<sup>th</sup>



This layout plan is a representation for illustrative purposes only. The dimensions and layout depicted here may vary from actuals



# 1BHK UNIT PLAN

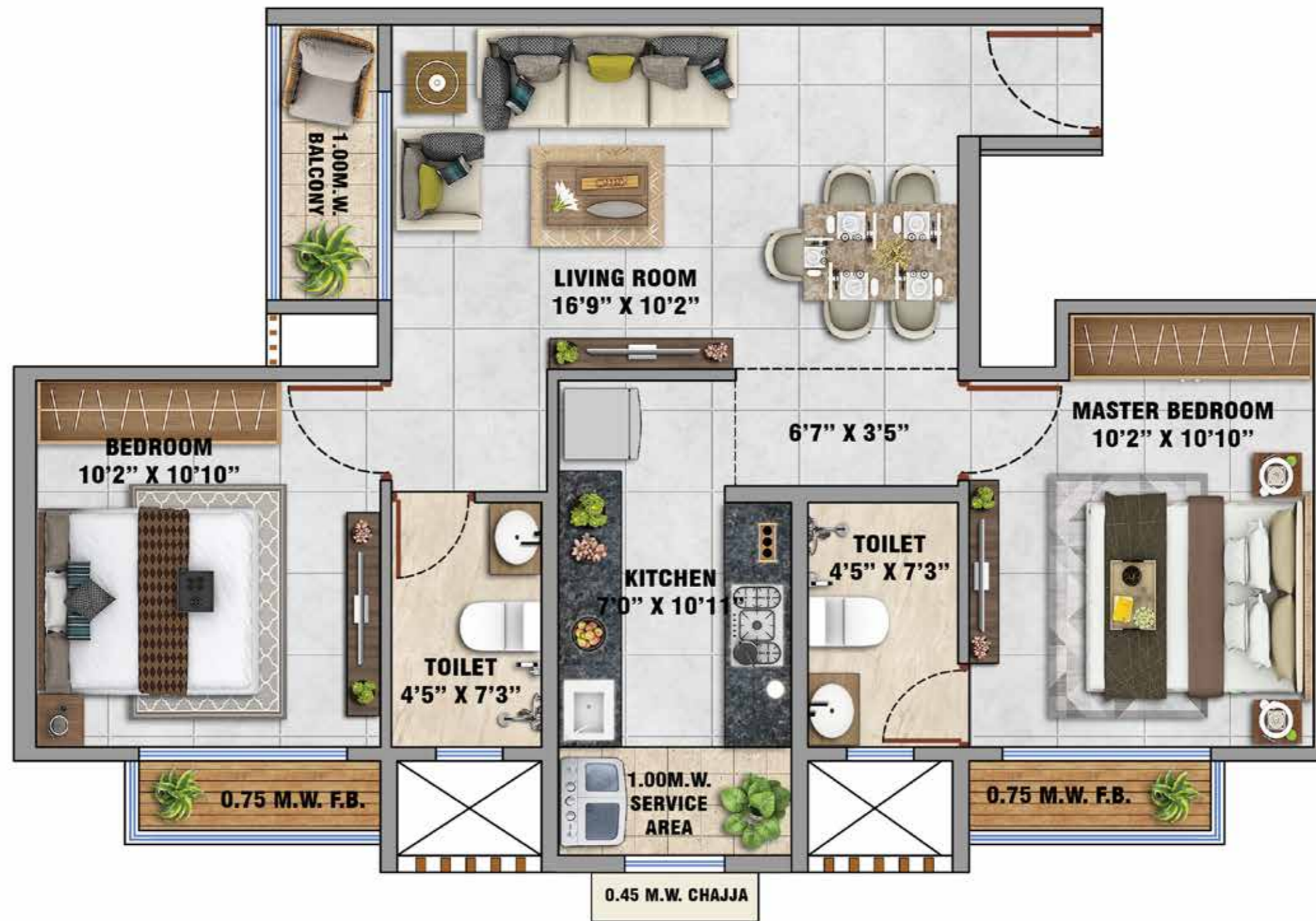


S.No. FLAT	FLAT TYPE	BAYLCON in SQ.FT	A.P. in SQ.FT	RERA CARPAET IN SQ.M	RERA CARPAET IN SQ.M	Usable Area in SQ.FT
1	1BHK	25.56	17.56	43.70	470.39	514

This layout plan is a representation of combining two adjacent units for illustrative purposes only. The dimensions and layout depicted here may vary by up to +/- 3% as per the above representation.



## 2BHK UNIT PLAN

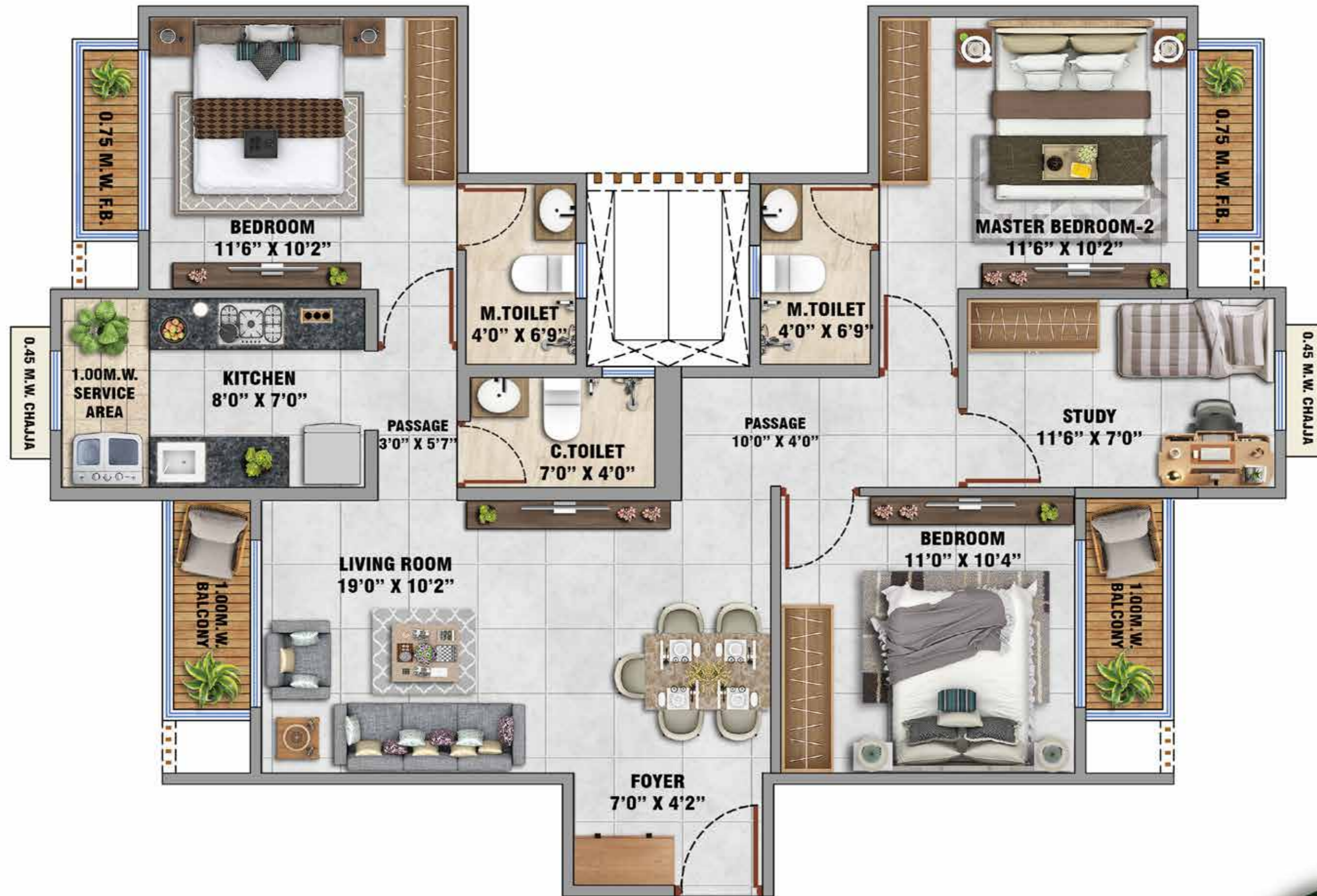


S.No. FLAT	FLAT TYPE	BAYLCON in SQ.FT	A.P. in SQ.FT	RERA CARPAET IN SQ.M	RERA CARPAET IN SQ.M	Usable Area in SQ.FT
2	2BHK	26.91	37.14	60.02	646.06	710

This layout plan is a representation of combining two adjacent units for illustrative purposes only. The dimensions and layout depicted here may vary by up to +/- 3% as per the above representation.



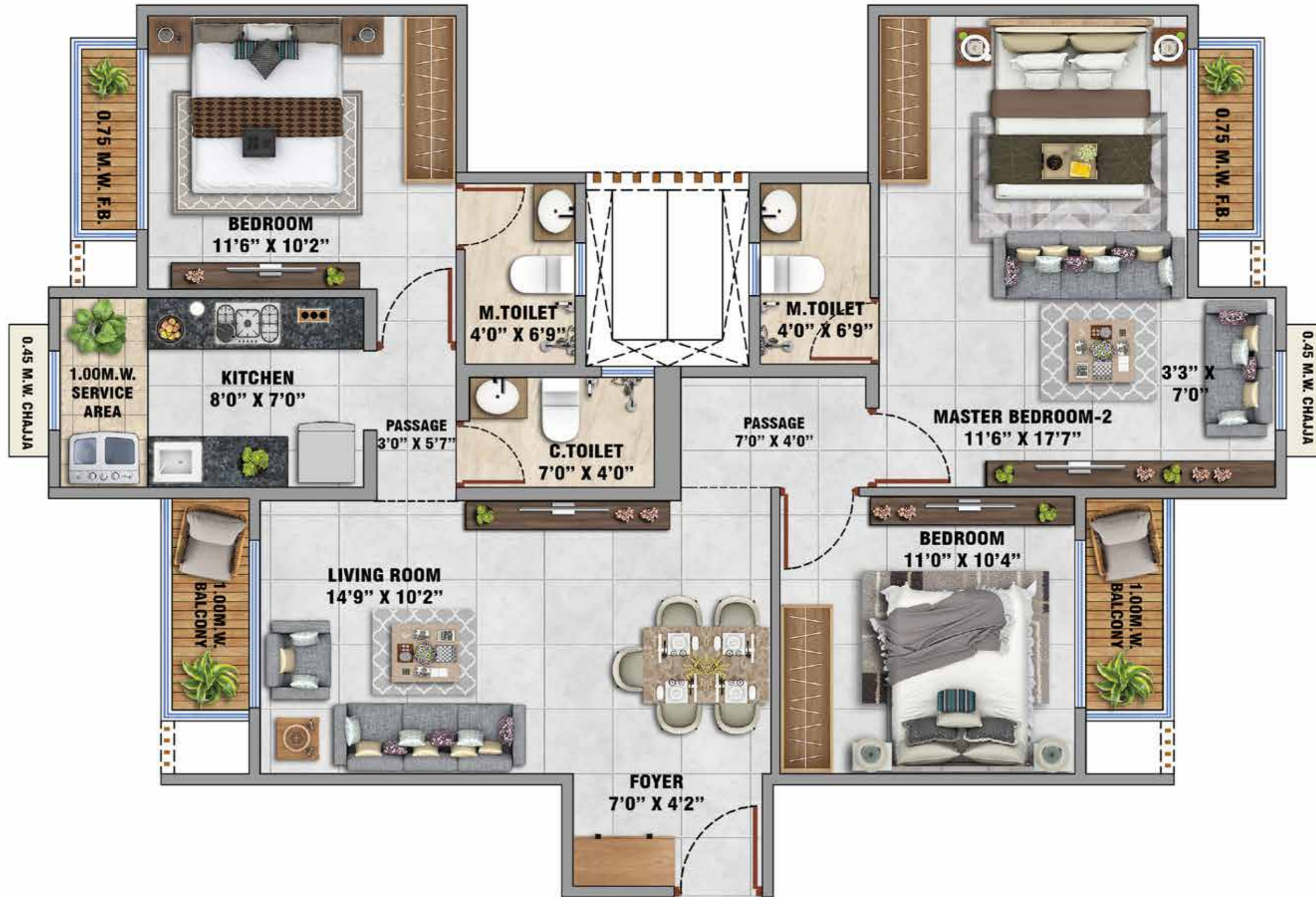
3BHK + STUDY



This layout plan is a representation of combining two adjacent units for illustrative purposes only. The dimensions and layout depicted here may vary by up to +/- 3% as per the above representation.



3BHK GRAND



This layout plan is a representation of combining two adjacent units for illustrative purposes only. The dimensions and layout depicted here may vary by up to +/- 3% as per the above representation.



4BHK GRAND



This layout plan is a representation of combining two adjacent units for illustrative purposes only. The dimensions and layout depicted here may vary by up to +/- 3% as per the above representation.





## THE FINEST INTERNAL SPECIFICATIONS *at a glance*



### STRUCTURE

RCC Framed Structure

### LIVING ROOM, KITCHEN & BEDROOM

Vitrified Tiles Of Branded Make

### BATHROOM & TOILET

Anti-Skid Flooring & Ceramic Tiles Upto Door Level

### STAIRCASE/PASSAGE/LIFT

Vitrified/Ceramic Tiles/Natural Stone Of Branded Make

### EXTERNAL WALL

Double Coat Plaster Or RCC Wall With 2 Coat Of External 100% Acrylic Paint Or Equivalent

### INTERNAL WALLS

- Internal Wall Of Living, Bedroom, Passage, Kitchen To Be Sand Plastered Or Gypsum Finish, 2 Coats Of Water Based Plastic Emulsion Paint Or Equivalent
- Internal Wall Of Common Passage/Area Of The Building To Be Sand Plastered Or Gypsum Finish, 2 Coats Of Distemper Paint Or Equivalent
- Internal Wall Of Machine Room, Meter Room To Be Sand Plastered Or Equivalent And White Washed
- Bathroom & Toilet To Be Cement Sand Plastered, Emulsion Or Equivalent Paint On Ceiling

### DOORS

Wooden/Steel For Main Doors, Wooden/Steel For Bathroom Doors, Wooden/UPVC For Toilet Doors

### WINDOWS

UPVC/Aluminum Frame With Clear Glass Of Branded Make

### RAILING

M.S./Aluminum Glass Railing Of Branded Make On Terrace/Balcony

### SANITARY & C.P. FITTINGS

Diverter Of Branded Quality Make

EWC With Cistern, Health Faucet & Fixtures, Ceramic Wash Basin With Bib Tap & Fixtures In Bathroom/Toilet Of Branded Make

### PLUMBING

UPVC/CPVC Or Equivalent Pipes In Internal & External Plumbing Work

### ELEVATORS

Lifts Of Branded Make

### ELECTRICAL

Copper Wiring With Modular Switches And Fixtures Of Branded Make

### KITCHEN

Granite/Vitronite Vitrified Platform Of Branded Make  
Stainless Steel Sink With Sink Tap In Kitchen  
Ceramic Tiles Of Branded Fixed Upto 600 Mm Level On Plaster Or RCC Surface, Above Kitchen Platform Counter





*one rare life*  
WITH THE BEST OF BOTH THE WORLDS.

NatureVista is coming together of two of the most renowned names in real estate - OYSTER & SAKET GROUP.

Saket Group is known for its high-rise developments, smart-home concepts and thoughtful design with sq. ft. utilization being the core.

Oyster is a name synonymous with lush landscaping, nature-based developments, creation of weekend homes and resort-themed projects. With two of the best names collaborating, you can be assured of a home that is futuristic yet rooted in nature's bounty.

*Makers of Urban Smart World*



*meets*

*Creators of Nature Inspired World*

